

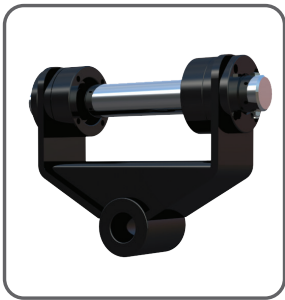
## SLIDE CRADLE, FIXED / LOOSE PIN & RYNO HITCH

### Frames

The frame is the connector between parent machine attachment. Digga manufactures hitches and frames for most skid steer loaders, backhoes, tele-handers and mini machines. Our frames feature a slide cradle which allows the user to offset the attachment mounted on the frame, enabling trenching and drilling close to structures.

### Hitches

As with frames, hitches are also connectors used between the parent machine and its attachment. Digga manufacture a range of hitches up to 90t excavators. Configurations include single pin, double pin, fixed, and loose pin, as well as the Digga developed Ryno hitch for larger drives.



Single Pin



Double Fixed Pin



Double Loose Pin



Ryno Hitch

### Ryno Hitch

The Ryno Hitch was designed by Digga Australia to make it easier to connect large augers and anchors to an auger drive. Using a Ryno Hitch will eliminate the costly need for a crane to connect pilling tools to your auger drive.

Specifically designed to handle the torsional loads of anchors and screw piling. The Ryno Hitch allows the operator to cradle the drive up to a 90 degree angle for easy connection to augers or anchors. Suits Supa Drives, Mega Drives, Ultra Drives, and Xtreme Drives.

### Features

- Extra heavy duty, fully engineered design
- Premium grade steel
- Highly efficient, compact design
- Cradle stops auger drives and anchors from swinging whilst manoeuvring over uneven terrain